
V20200072

CW-5202

INDUSTRIAL REFRIGERATION CHILLER

USER MANUAL

Thank you for choosing us for your industrial chilling needs. Please read these instructions carefully before installation and use. Keep them for future reference.



CONTENTS

Warnings	1
Parts Diagram	2
Installation	3
Operation & Adjustment	4
Alarms	7
Specifications	8
Troubleshooting	9

PACKAGE CONTENTS

- 1 × Industrial Chiller
- 1 × Power Cord
- 1 × Alarm Signal Output Plug
- 1 × Spare Fuse (held near the rear power socket)
- 1 × Instruction Manual



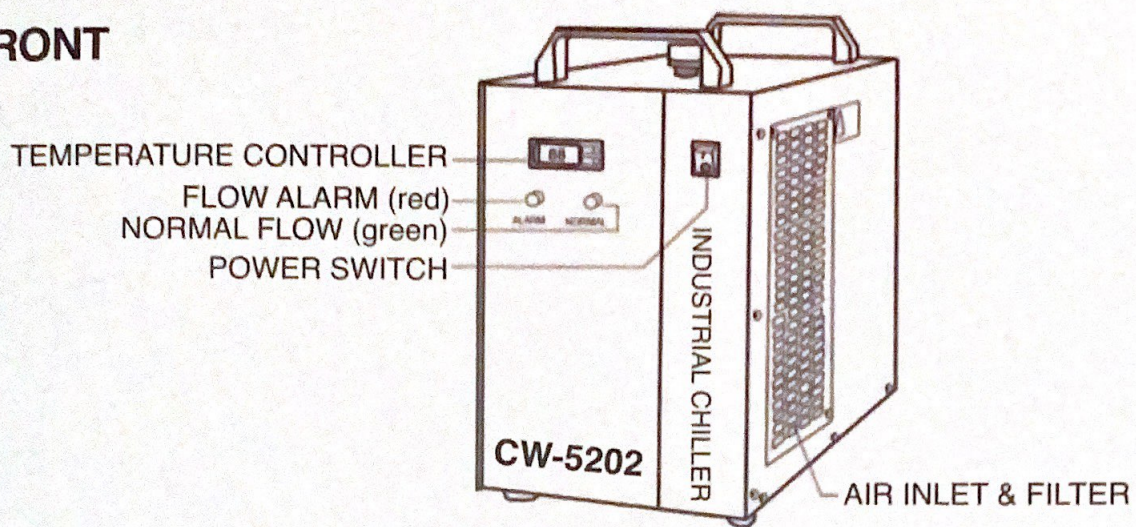
WARNINGS

- DO NOT run this chiller without first providing adequate water (See p. 3). Deionized or distilled water is preferable.
- Ensure that the power supply is well-connected and stable and the chiller is well grounded. Use only with 110V/60Hz power.
- Place this chiller in a well-ventilated, dry environment away from heat sources but warm enough to avoid freezing temperatures.
- Leave at least 1 ft. (30 cm) of space behind its rear air outlet.
- Leave at least 4 in. (10 cm) of space around the two side air inlets.
- Clean the air filter regularly.
- Disconnect the power and drain all water from the chiller before storage or transport.

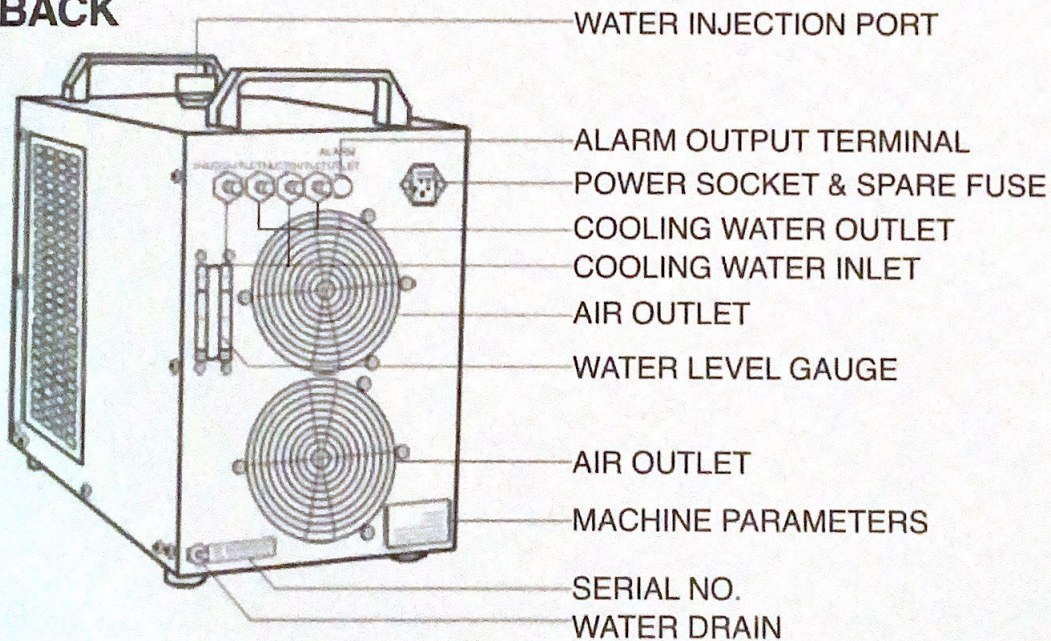
- Pay attention to possible condensation on the chiller and its water lines. If condensation is observed, raise the water temperature, keep the water lines and cooled components warmer, or reduce ambient humidity until no condensation occurs.
- When cooling a laser engraver, take care that this device does not cause the room's humidity to exceed safe levels.
- Do not allow children or untrained persons to use this chiller.

PARTS DIAGRAM

FRONT

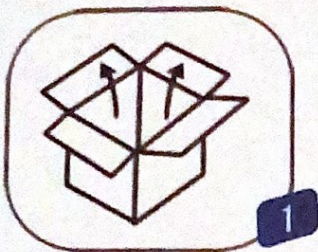


BACK

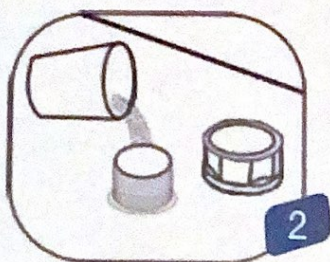


INSTALLATION

It is very simple to install this industrial chiller.



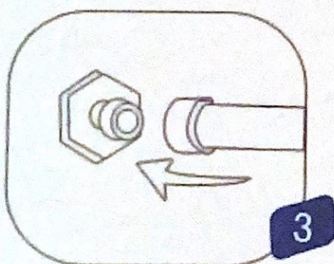
Open the package to check if the machine is intact and all the necessary accessories are included.



Open the injection port and add water. For best results, use deionized water.

Use the water level gauge and ensure the level is in the middle or top of the NORMAL (green) area.

Pour slowly and do not allow the water to overflow. For cooling carbon steel equipment, the water should have an appropriate amount of anticorrosive additive.



Connect the water inlet and outlet pipes to the system you wish to cool.

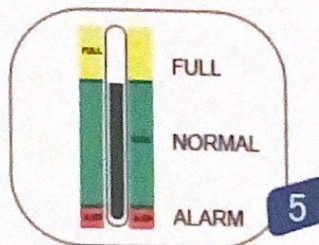


Plug in the power and flip the power switch. The pump will begin working.

There may be some bubbles at first. These should disappear after a minute or two.

Don't worry if the fans and other components of the chiller do not activate. They are usually automatically controlled (See p. 4) and will not begin working until they are needed by the machine.

In different conditions, the time for startup may vary from seconds to a few minutes. Do not become frustrated and switch the machine on and off, except when necessary to add water.



Check the water level of the water tank again, using the water level gauge.

The water level of the chiller may be lowered as it fills the cooling path in your device. If necessary, carefully add more water to the chiller to maintain the level in the NORMAL (green) area.

If the water level drops sharply or continues to go down during normal use, turn off your devices and examine the water pipes and cooling path for leakage. Repair any such leaks before restarting the devices and continuing work.

6

Adjust the parameters of the device as needed.

The CW-5202 has an intelligent thermostat and normally does not need any adjustment. If it becomes necessary, refer to the next page.

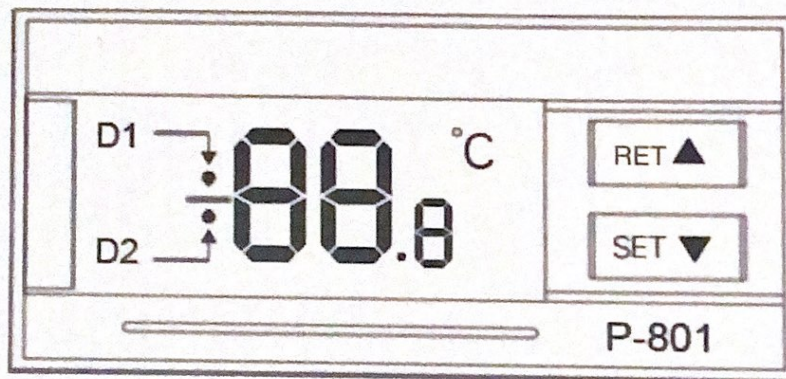
OPERATION AND ADJUSTMENT

The new P-801 intelligent temperature controller does not need to adjust its parameters in normal circumstances. It will self-adjust its parameters according to the ambient room temperature to meet its cooling requirements.

The new P-802 intelligent temperature controller has a separate default, maintaining a constant 77°F (25°C). Users can adjust this value as needed.

The two controllers have the same functions and operating system, apart from their default modes.

1. CONTROL PANEL



(1) Indicators D1 & D2 above convey the following information:

D1

ON: The thermostat is adjusting water temperature according to the room temperature.
OFF: The thermostat is maintaining a constant water temperature.
FLASHING: The thermostat is accepting new parameters from the user or showing the ambient room temperature.

D2

ON: The chiller is working in its refrigeration mode.
OFF: The chiller is working in its insulation mode.
FLASHING: The chiller is working in its energy-saving mode.

- 2) Press ▼ to show the ambient room temperature. D1 will flash. After 3 seconds, the display will revert to its previous default.
- (3) ▲ and ▼ adjust the display status and the values of the parameters.
- (4) RET enters commands.
- (5) SET allows parameters to be changed and reset.

2. Restoring factory settings

Before the machine starts up, press and hold ▲ and ▼ until the controller displays rE. 3 seconds after releasing the buttons, the control panel will resume working with all parameters restored to their factory defaults.

3. Thermostat parameters list

Order	Code	Item	Range	P-801 Defaults	P-802 Defaults	Note(s)
1	F0	Water Temperature	F9–F8	25	25	Celsius value of constant temperature mode
2	F1	Temperature Difference	–15 to +5	–2	–2	Celsius value of the difference between water and air temperatures in intelligent control mode
3	F2	Cooling Hysteresis	0.1–3.0	0.8	0.1	
4	F3	Control Mode	0–1	1	0	1 is intelligent control mode 0 is constant temperature mode
5	F4	Overheated Water Alarm	1–20	10	10	
6	F5	Overchilled Water Alarm	1–20	15	15	
7	F6	Overheated Room Alarm	40–50	45	45	
8	F7	Password	00–99	8	8	
9	F8	Highest Allowed Water Temperature	F0–40	30	30	
10	F9	Lowest Allowed Water Temperature	1–F0	20	20	

4. General settings adjustment

- (1) Press SET to enter the user-defined parameter mode. D1 will flash.
- (2) In constant temperature mode, the first screen will be F0, showing the temperature the chiller will keep the water. Press ▲ or ▼ to change the value. After you have chosen a value, press RET to save it and exit. Pressing SET will exit without saving your changes. Waiting more than 20 seconds to choose an action will also exit without saving any changes.
- (3) In intelligent control mode, the first screen will be F1, showing the control panel for the set temperature difference between the water and air in degrees Celsius. Adjust its value in the same way.

5. Advanced settings adjustment

- 1) Press and hold both ▲ and SET for 5 seconds until 0 is displayed.

(2) Press ▲ to choose the one or two digit passcode. (The factory default is 8.) Press SET again.

(3) If the password is correct, F0 is shown and D1 will flash. (If the password is incorrect, the system will exit to its default display.)

(4) Press ▲ or ▼ to cycle through the parameters mentioned on p. 5.

(5) Press SET to select one of these parameters to adjust.

(6) Press ▲ or ▼ to adjust its value. Press RET to save your changes and exit. Pressing SET will exit to the previous menu level without saving your changes. Waiting more than 20 seconds to choose an action will also exit without saving any changes.

(7) No changes will take effect until you have used RET to save the changes and exited parameter adjustment, returning to normal operation.

6. Advanced parameters adjustment examples

Order	Code	Item	Range	P-801 Defaults	P-802 Defaults	Value in case 1	Value in case 2	Value in case 3
1	F0	Water Temperature	F9–F8	25	25	/	28	25
2	F1	Temperature Difference	–15 to +5	–2	–2	–3	/	/
3	F2	Cooling Hysteresis	0.1–3.0	0.8	0.1	0.5	2.0	1.0
4	F3	Control Mode	0–1	1	0	1	0	0
5	F4	Overheated Water Alarm	1–20	10	10	10	5	4
6	F5	Overchilled Water Alarm	1–20	15	15	10	10	14
7	F6	Overheated Room Alarm	40–50	45	45	45	45	45
8	F7	Password	00–99	8	8	8	8	8
9	F8	Highest Allowed Water Temperature	F0–40	30	30	31	30	30
10	F9	Lowest Allowed Water Temperature	1–F0	20	20	25	5	5

Case 1: The chiller is in intelligent control mode and requires the water to be between 77–88°F (25–31°C). With the ambient room temperature kept constant, the water temperature will remain 5°F (3°C) lower with a deviation of ±0.9°F (±0.5°C). An alarm will sound if the water temperature is 18°F (10°C) higher or lower than this target.

Case 2: The chiller is in constant temperature mode and requires the water to be at 82°F (28°C) with a deviation of ±3.6°F (±2°C). An alarm will sound if the water temperature is

9.6°F (5°C) higher than this target or if the water is 18°F (10°C) lower than this target.

Case 3: The chiller is in constant temperature mode and requires the water to be at 77°F (25°C) with a deviation of $\pm 1.8^\circ\text{F}$ ($\pm 1^\circ\text{C}$). An alarm will sound if the water temperature goes above 86°F (30°C) or below 50°F (10°C).

ALARMS

(1) Alarm display

When an alarm occurs, the display will alternate between the water temperature and the error.

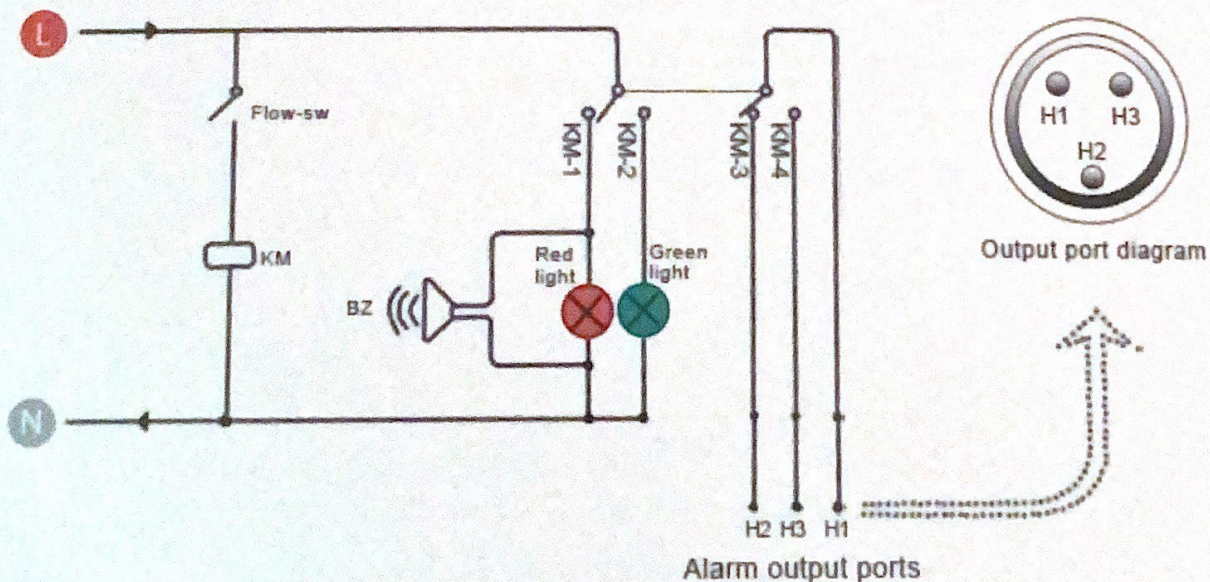
E1	E2	E3	E4	E5
Overheated room temperature	Overheated water temperature	Overchilled water temperature	Room temperature sensor failure	Water temperature sensor failure

There will also be a separate alarm if the chiller senses that there is insufficient flow of water.

(2) Turning off an alarm

To silence the noise from an alarm, push any button. The display will continue to show the error until the underlying problem is corrected.

(3) Flow alarm ports and wiring diagram



(4) Flow alarm causes

DISPLAY CONDITION	Normal flow indicator	Alarm flow indicator	Buzzer	H1, H2 Output	H1, H3 Output
Normal	● On	⊗ Off	⊗ No sounds	⊗ Off	■ On
Blocked pathway	⊗ Off	● On	⊗ Sounds	■ On	⊗ Off
Water shortage	⊗ Off	● On	⊗ Sounds	■ On	⊗ Off
Faulty pump	⊗ Off	● On	⊗ Sounds	■ On	⊗ Off
Power interruption				■ On	⊗ Off

Note that the flow alarm is connected to relay contacts requiring that the operating current be less than 5A and working voltage less than 300V.

SPECIFICATIONS

MODEL	CW-5200AG	CW-5200BG	CW-5200DG	CW-5200AJ	CW-5200BI	CW-5200DI	CW-5200AK	CW-5200BK	CW-5200DK
Voltage	220-240V AC	208-230V AC	100-110V AC	220-240V AC	208-230V AC	100-110V AC	220-240V AC	208-230V AC	100-110V AC
Frequency	50Hz	60Hz	60Hz	50Hz	60Hz	60Hz	50Hz	60Hz	60Hz
Current	2.4-3.1A	2.6-3.3A	4.5-6.5A	2.4-3.1A	2.6-3.3A	4.5-6.5A	2.4-3.1A	2.6-3.3A	4.5-6.5A
Compressor power	0.52KW 0.71HP	0.50KW 0.68HP	0.68KW 0.93HP	0.52KW 0.71HP	0.50KW 0.68HP	0.68KW 0.93HP	0.52KW 0.71HP	0.50KW 0.68HP	0.68KW 0.93HP
Refrigeration capacity	5084 Btu/h 1.49KW 1281 Kcal/h	4882 Btu/h 1.46KW 1256 Kcal/h	5186 Btu/h 1.52KW 1307 Kcal/h	5084 Btu/h 1.49KW 1281 Kcal/h	4882 Btu/h 1.46KW 1256 Kcal/h	5186 Btu/h 1.52KW 1307 Kcal/h	5084 Btu/h 1.49KW 1281 Kcal/h	4882 Btu/h 1.46KW 1256 Kcal/h	5186 Btu/h 1.52KW 1307 Kcal/h
Refrigerant	R-22/R134a/R-410a								
Refrigerant charge	380g	380g	350g	380g	380g	350g	380g	380g	350g
Precision	±0.3℃								
Reducer	Capillary								
Protection	Overcurrent protection for compressor,flow alarm,over temperature alarm								
Pump power	0.03KW			0.1KW			0.05KW		
Tank capacity	6L								
Inlet and outlet	External Ø10mm brass connector						Ø8mm speedy connector		
Max. Lift	10M			25M			70M		
Max. Flow	10L/min			16L/min			2L/min		
Net Weight	30Kg						33Kg		
Gross Weight	35Kg						38Kg		
Dimension	22x11.4x17 in.								
Package dimension	28x17x23.6 in.								

TROUBLESHOOTING

Never use a dangerous system like a laser engraver if the water cooling system is malfunctioning. If the laser or other dangerous device is already on, shut it down immediately and correct the problem with the chiller before using it again.

Failure	Approach
The machine has no power.	Check that the power cord is firmly connected.
	Cut the device's power and pull out the fuse box from the back of the machine. If the fuse has blown, ensure that the power supply is stable or install a voltage regulator. Replace the fuse with the spare stored in the fuse box.
The machine is on, but the water does not flow.	Check that there are no leaks in the water pipes or cooling pathway. Then add more water until the water gauge rises to the correct height.
The water is flowing but there is an alarm..	Check that there are no leaks in the pipes and add more water.
The water temperature is too high.	Check that the chiller has proper room for ventilation and the air filter is clean.
	Ensure that the power supply is stable or install a voltage regulator.
	Restore the factory default parameters (See p. 5).
	Ensure that there is sufficient time for refrigerator to occur before activating the device you want to cool. At most, with a functioning machine, this should take less than 5 minutes.
	Reduce the heat load or upgrade to a stronger chiller.
The fan does not turn on.	This is normal when the water is below 70°F. If the water is heated and the fan still does not operate, contact customer service.
The room temperature is too high.	Ensure the chiller has proper room for ventilation (See p. 1). If it already does, take action to cool the surrounding work space.

There is constant condensation around the machine and the water lines.	Increase the water temperature or heat the area around the cooling path. Failing this, take action to reduce the ambient humidity of the surrounding work space.
Water drains slowly.	Open the injection port.

CONTACT US

Thank you for your purchase. Don't hesitate to contact us with any questions or concerns at help@cs-supportpro.com. Customers are always the best teachers to keep us growing!